

MFBH SINGLE BAG FILTER HOUSING



MEY's MFBH single bag filter stainless steel housing features light weight and versatile, to suit general commercial and industrial liquid applications. The cost effective stainless steel concave casting cover, provide a better sealing environment and easy to open the top cover and replacement the filter bags.

Typical Application:

- Water treatment
- Municipal Water Treatment
- Industrial Water Treatment
- Pulp and Paper
- Pharmaceutical
- Lubricants, Metalworking Fluids
- Solvents
- Food and Beverage
- Chemical Processing
- Paints, Inks, Resins and Coatings
- Electronics
- Petrochemicals

Filter Specifications:

No. Of Filter Bags

1

Filter Bags Sizes

01: Size 01 02: Size 02

03: Size 03 04: Size 04

05: Size 05

Housing Diameter

4" / 7" / 7.5" / 8"

Housing Material

SS304, SS316L, CARBON STEEL

Seal Material

Buna N

Inlet & Outlet

DIN / ANSI / BSP / NPT

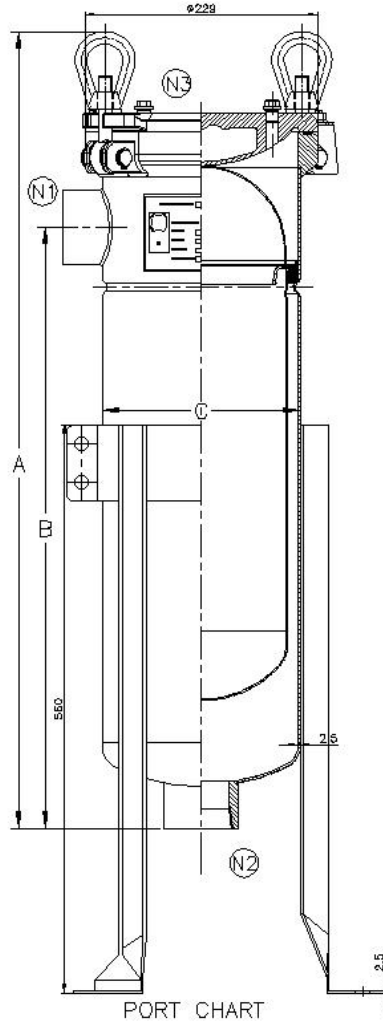
Max. Operating Temperature

150 °C

Max. Operating Pressure

10Bar (150PSI)

■ MFBH



Dimensions

Dimensions	Size 01	Size 02	Size03	Size04	Size05
A(housing Height)	694mm(27.3")	1088mm(42.8")	391mm(15.4")	544mm(21.4")	697mm(27.4")
B(Inlet and outlet distance)	499mm(19.6)	894mm(35.2")	327.5mm(12.9")	480.5mm(18.9")	633.5mm(25.0)
C(Diameter)	195mm(7.5")	195mm(7.5")	114mm(4.5")	114mm(4.5")	144mm(4.5")

Specifications

Specifications	Size 02 & Size 01	Size 03 & Size 04 & Size5
Max.Operating pressure(Bar)	10	8
Max.Operating Temperature(°C)	120	100
Filter Area(sq.ft)	5.6/2.8	0.8/1.5/2.1
Filter Volume(gal)	99/56.3	14/20/25
Max.Flow(m ³ /h)	40/20	
Standard Inlet/Outlet	2" Threaded	1" Threaded
Vent Ports	1/4" Female	1/4" Female
Material of Construction	SUS304/316L	SUS304/316L
Seal Meaterial	BUUNA-N	BUUNA-N

Order Information

MFBH	7	-01	-02	SS304	1"	NPT	SW	PC
Model	Diameter	No.of Filter Bags	Filter bag size	Material	INLET/OUTLET SIZE	INLET/OUTLET CONNECTION	TOP CLOSURE	Surface Finish
MFBH	4=4"	01	01=Size #1	SS304	1"	NPT	SW=SWING	PC=Poly coat
	7=7"		02=Size#2	SS316L	1.5"	BSP	BOLT	GB=Glass bead
	7.5=7.5"		03=Size#3			TC=Tri-Clamp		EP=Electropolish
	8=8"		04=Size#4			RF=FLANGE		
			05=Size#5					



Mey Membrane Technology Co.,Ltd
 Add.:Fuyang district, Hangzhou
 Tel.:0571-63465770