

# MTBH SINGLE BAG FILTER HOUSING



MEY's TOPLINE single bag filter stainless steel housing with the design of top inlet, requires less headroom and directs liquid flow through the cover which improves sealing, reduces product loss and makes filter bag change-outs cleaner. As standard, the MTBH series is provided with heavy duty adjustable mounting bracket support legs and SS filter basket supplied to support for the filter bag.

## Typical Application:

- Automotive
- Food and Beverage
- Chemical Processing
- Paints, Inks, Resins and Coatings
- Electronics
- Petrochemicals
- Municipal Water Treatment
- Industrial Water Treatment
- Pulp and Paper
- Pharmaceutical
- Lubricants, Metalworking Fluids
- Solvents

## Filter Specifications

### No. Of Filter Bags

1

### Filter Bags Sizes

01: Size 01

02: Size 02

### Housing Diameter

8"

### Housing Material

SS304, SS316L, CARBON STEEL

### Seal Material

Buna N

### Inlet & Outlet

DIN / ANSI / BSP / NPT

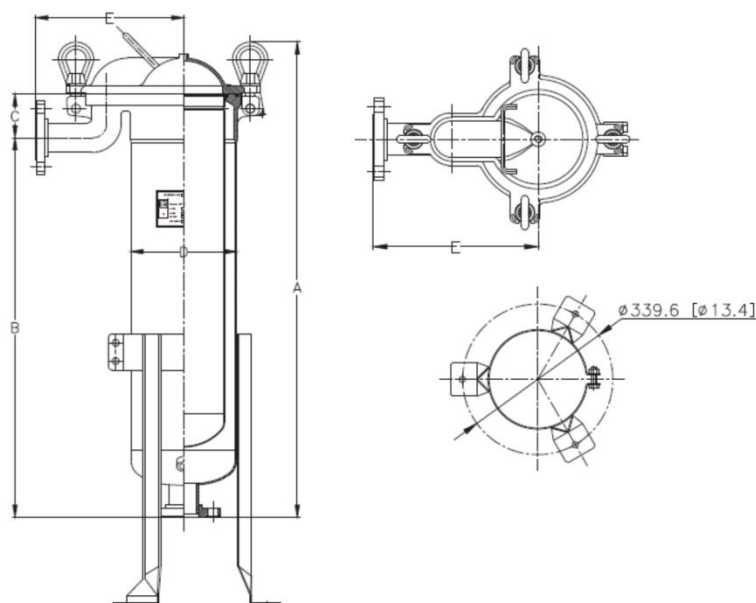
### Max. Operating Temperature

150 °C

### Max. Operating Pressure

10Bar (150PSI)

■ MTBH



## Dimensions

Model	Bag Size (Area/m <sup>2</sup> )	Flow rate Gpm(m <sup>3</sup> /hr)	Connection Inlet/Outlet	Housing Vol.,L	Dimensions,mm				
					A	B	C	D	E
101	#1(0.25)	45(11.4)	2"FNPT	49.21	593	394	90.5	219	307
102	#2(0.5)	90(18.2)	2"FNPT	102.20	986	787	90.5	219	307

Note:1,Above Flow rate is for guide line only.0.25psi pressure drop with clean water(viscosity cp=1) at 25℃ with perforated basket and without filer bag. **All dimensions are for reference.**

## Order Information

MTBH	8	-01	-02	SS304	1"	NPT	VC	PC
Model	Diameter	No.of Filter Bags	Filter bag size	Material	INLET/OUTLET SIZE	INLET/OUTLET CONNECTION	TOP CLOSURE	Surface Finish
MTBH	8=8"	01	01=size #1	SS304	1"	NPT	SW=Swing Bolt	PC=Poly coat
			02=Size#2	SS316L	1.5"	BSP		GB=Glass bead
						TC=Tri-Clamp		P=Electropolish
						RF=FLANGE		



Mey Membrane Technology Co.,Ltd  
 Add.:Fuyang district, Hangzhou  
 Tel.:0571-63465770